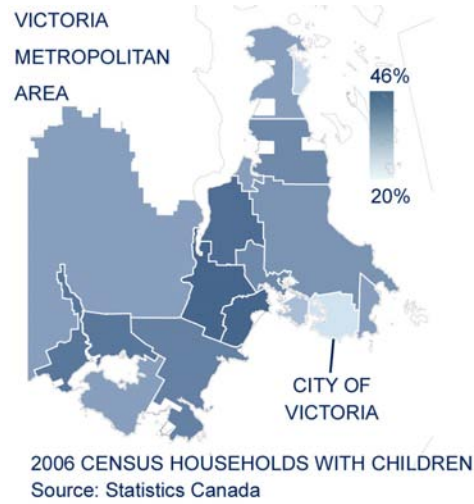
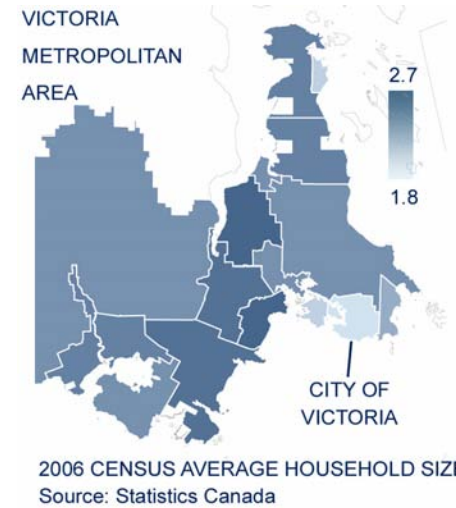
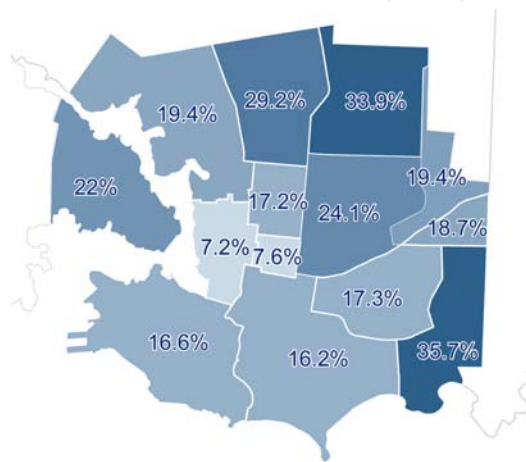


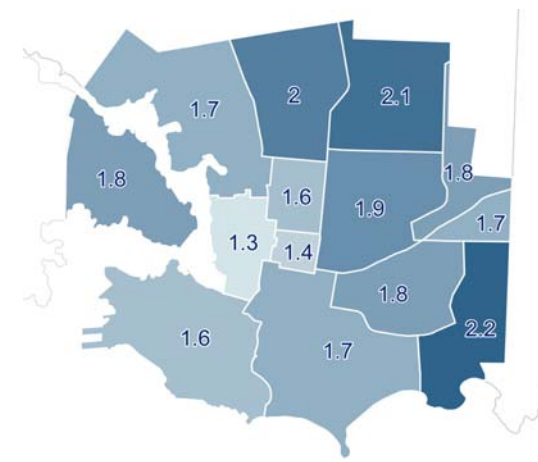
1.6 Family and Household Characteristics



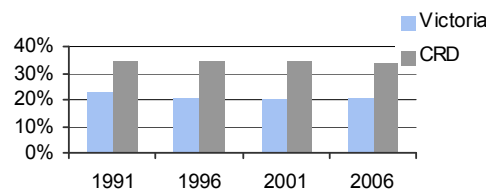
Households With Children (2006)¹



Household Size 2006

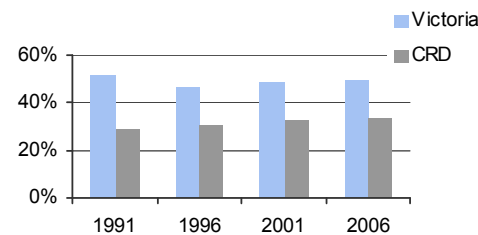


Households With Children



DATA SOURCE: STATISTICS CANADA

One-person Households

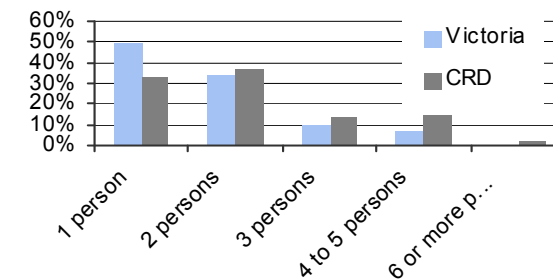


DATA SOURCE: STATISTICS CANADA

The City of Victoria has a lower rate of households with children and a smaller household size than the rest of the region. Between 1991 and 2006, the biggest increase in family types was in lone parent families (an increase of 3%).

The neighbourhoods of Gonzales, Oaklands, and Hillside Quadra all have both the highest proportion of households with children and the largest household sizes. Downtown and Harris Green have the lowest proportion of households with children.

Household Size, 2006



DATA SOURCE: STATISTICS CANADA

Family Structure 1991—2006

	1991	1996	2001	2006	Change 1991-2006
Total number of census families in private households	16,635	16,800	17,085	18,320	+ 1,685
Total couple families	82%	80%	79%	79%	-3%
With children at home	27%	27%	26%	27%	-
Without children at home	55%	53%	53%	52%	-3%
Total lone-parent families	18%	20%	21%	21%	+ 3%
Female parent	15%	17%	18%	17%	2%
Male parent	2%	2%	3%	4%	2%

DATA SOURCE: STATISTICCS CANADA

Census Average Household Size

	1991	1996	2001	2006
City of Victoria	1.9	1.8	1.8	1.8
Victoria CMA	2.3	2.1	2.3	2.2
British Columbia	2.6	2.6	2.6	2.5

DATA SOURCE: STATISTICS CANADA



RELATED SHEETS

[1.2 POPULATION DENSITY](#)

[1.3 AGE OF POPULATION](#)

[1.4 NEIGHBOURHOOD POPULATION AGE TREND](#)

[2.2 HOUSE & HOUSEHOLD SIZE](#)

1.6 Family and Household Definitions

Households

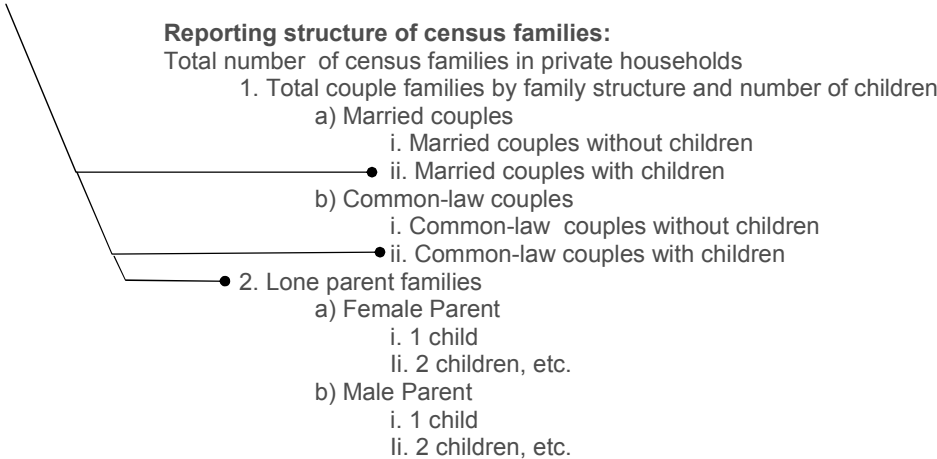
Private household: Private Household refers to a person or a group of persons (other than foreign residents) who occupy the same dwelling and do not have a usual place of residence elsewhere in Canada. It may consist of a family group (census family) with or without other persons, of two or more families sharing a dwelling, of a group of unrelated persons, or of one person living alone. Household members who are temporarily absent on Census Day (e.g., temporary residents elsewhere) are considered as part of their usual household. For census purposes, every person is a member of one and only one household. Unless otherwise specified, all data in household reports are for private households.

Family

Census family refers to a married couple (with or without children of either or both spouses), a couple living common-law (with or without children of either or both partners) or a lone parent of any marital status, with at least one child living in the same dwelling. A couple may be of opposite or same sex. 'Children' in a census family include grandchildren living with their grandparent(s) but with no parents present.

SOURCE: STATISTICS CANADA 2006

“Households with Children” The data used to produce this is derived by summing the family households containing children— households included are indicated.



Notes on Data Presented

Households with Children

	1991	1996	2001	2006
Victoria	23%	21%	20%	21%
Region*	35%	34%	34%	34%

* Region refers to the entire CRD